

Model : GP605

Ref. No. : FF-T01-K1-000007-02

Date : March 29, 1999

:

REVISED

FF-T01-K1-000007-01(March 25, 1999): Correcting typographical errors,
①×2 on p.1

© Canon (UK) Limited

Location : SERVICE MANUAL (FY8-13FD-000) ~~(FY8-12DC-000)~~ ①

Subject : UPDATING THE IMAGE ADJUSTMENT BASIC PROCEDURE

Reason : The steps used in the procedure have been updated to prevent darkening of image, possibly occurring when performing the “Image Adjustment Basic Procedure” found in the Service Manual (pp.13-3 through -5; (FY8-13FD-000). ~~(FY8-12DC-000)~~ ①

Reference:

A digital copier is designed to perform the following to improve reproduction of images:

1. edge emphasis processing
2. density processing

As a result, images from a digital copier generally tend to appear darker than ones produced by an analog copier.

Details : For details, see the pages that follow.

A. Image Adjustment Basic Procedure

1 Making Pre-Checks

<Making Pre-Checks>

Clean the following:
 [1] grid wire
 [2] primary charging wire
 [3] pre-transfer charging wire
 [4] transfer charging wire

Check the following:
 [1] height of the charging wire

Using the NA3 Chart, make two copies in the following mode:
 [1] AE
 [2] text
 [3] text/photo

Generate several test pages of the following:
 [1] PG4: halftone (printer)
 [2] PG6: blank (reader)
 [3] PG7: halftone (reader)
 [4] PG8: solid black (reader)

Output Conditions
 • F value at 5
 • potential control ON

If the test print
has an error,

Go to
 2 Checking the Printer Side (1/2)

If only the copy image
has a fault,

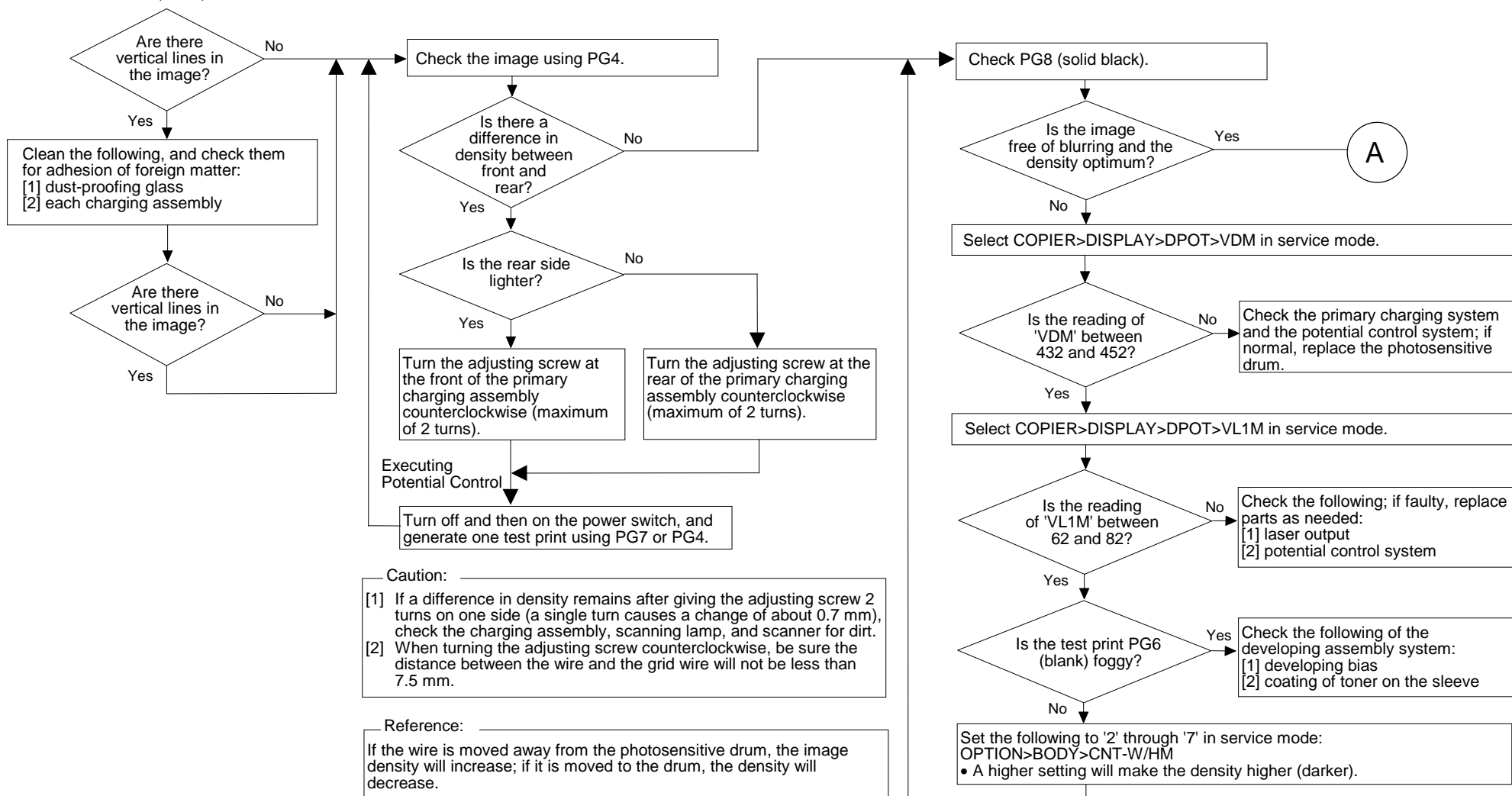
Go to
 3 Checking the Scanner Side

2 Checking the Printer Side (1/2)

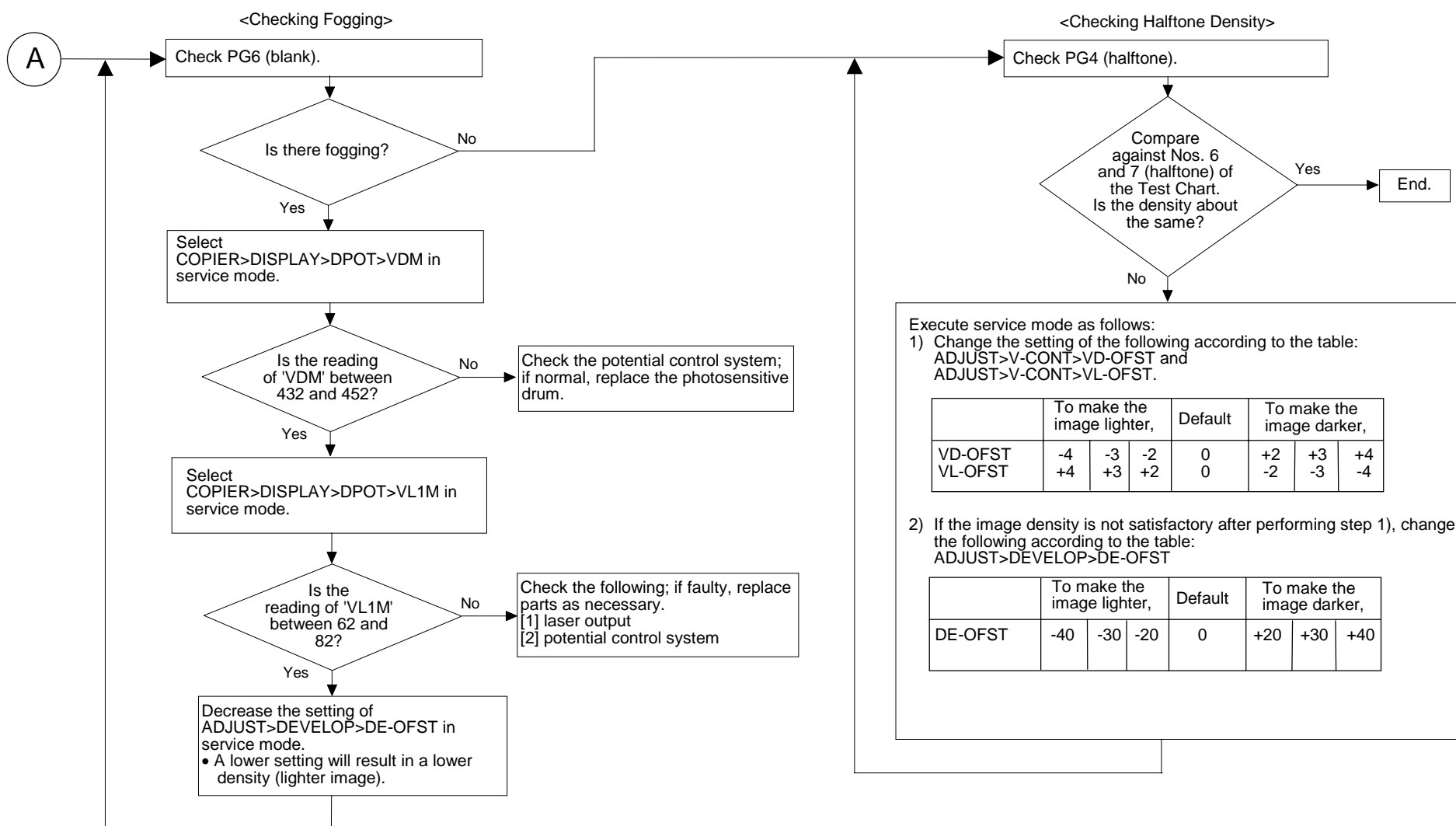
<Checking the Image>
• Use PG4, PG7, and PG8.

<Checking the Density Slope>

<Checking the Solid Black Density>



3 Checking the Printer Side (2/2)



4 Checking the Scanner Side

